

Čtvrť Emila Kolbena IV. etapa – budova KLM, sekce M  
BM10313 2 + KK / 3.NP

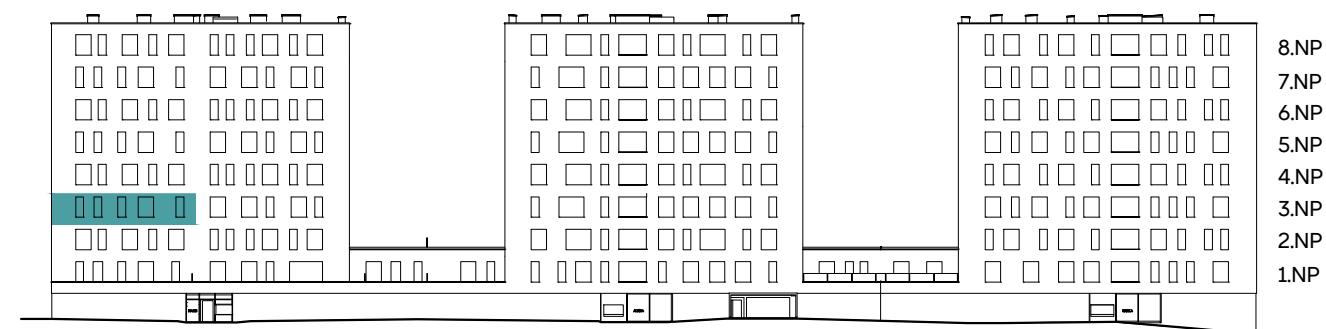
plocha dle NV č. 366/2013 Sb. 54,9 m<sup>2</sup>  
užitná plocha celkem 53,0 m<sup>2</sup>  
plocha lodžie 4,9 m<sup>2</sup>

# Čtvrť Emila Kolbena

sekce M - Marie

sekce L - Albina

sekce K - Kamila



pohled severní

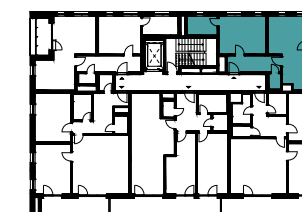
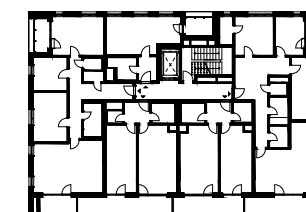
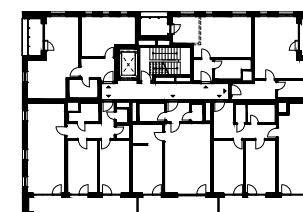
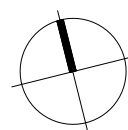
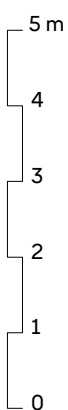
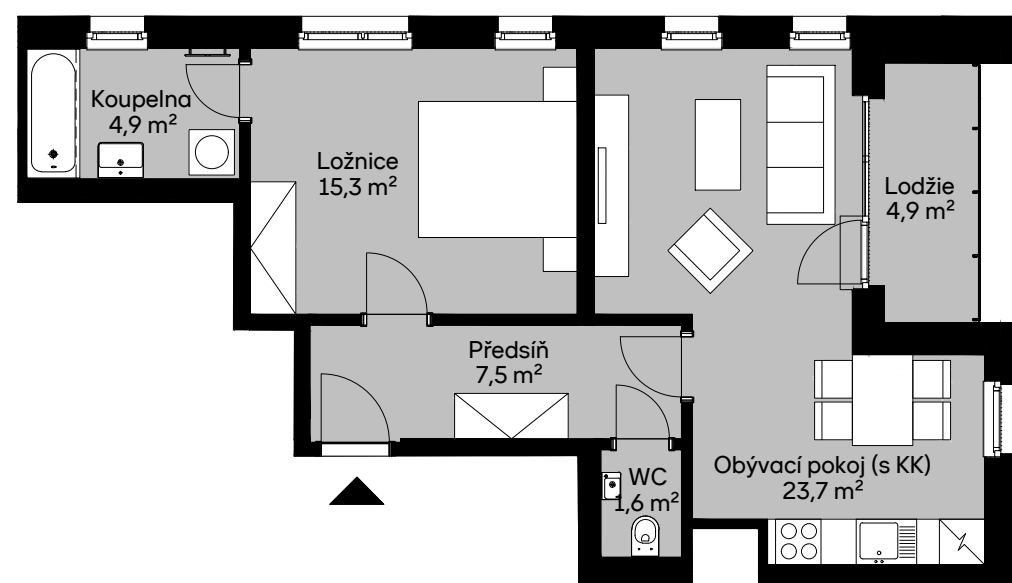
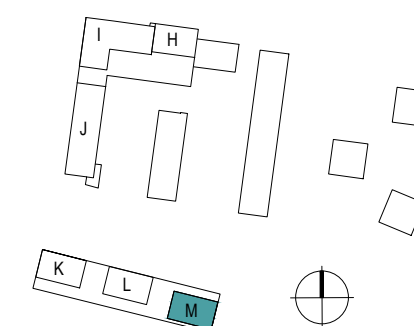


schéma podlaží



situace